

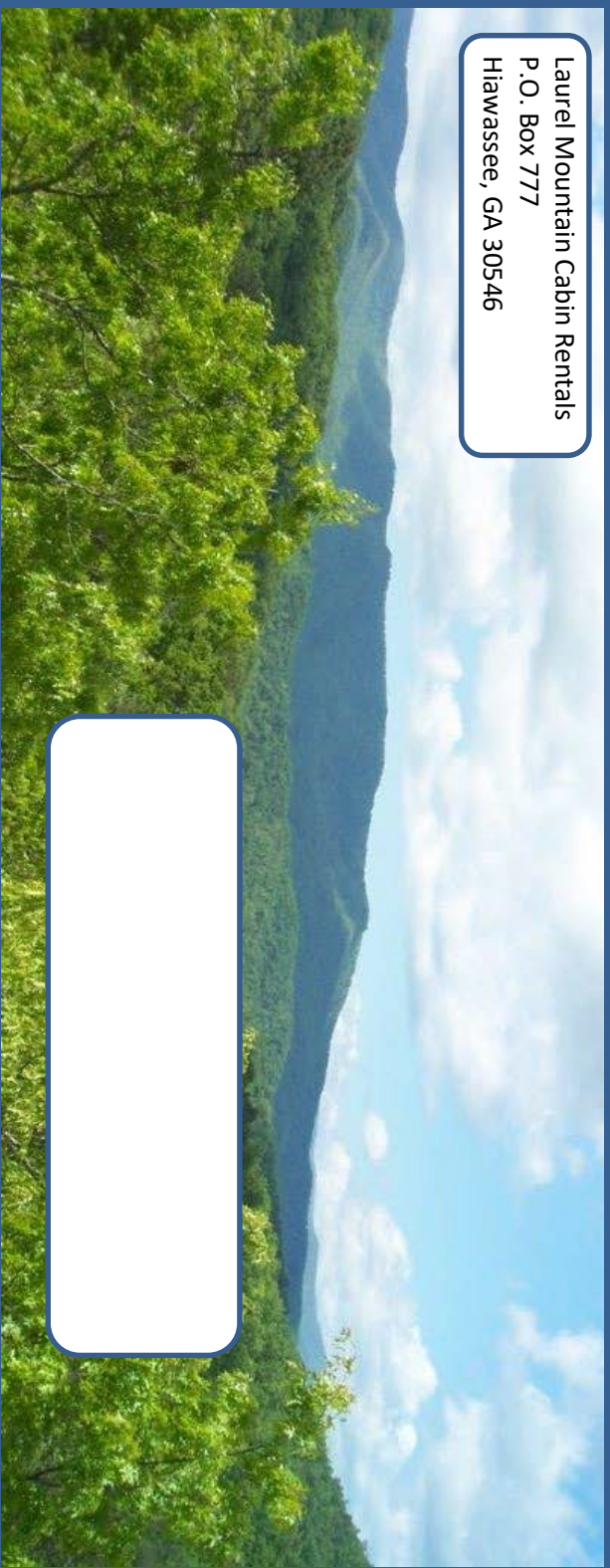
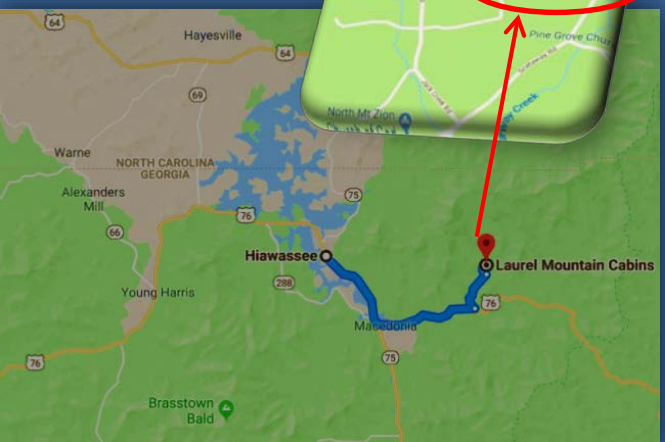
**Year-Round Rate Special:
Pay for 6 Nights, Get 1 Night Free!!**

2-Night Minimum
**Minimum stay varies during
holidays/special events**

**Call us for booking options!
706-896-8015 or 888-859-6018**

DIRECTIONS

From downtown Hiawassee, take Hwy 76 East, turn LEFT just before mile marker 16 on Scataway Road (left by large sign, "North Mt. Zion Church"). Go 1.2 miles and turn LEFT on Jack Creek Road. Go to 1st road on the RIGHT, Laurel Mtn Road. Take road to top of the hill, and past stone pillars with signs for Laurel Mountain Cabins. Office is first RIGHT after passing the stone pillars. Cabins are on left side of road.



Laurel Mountain Cabin Rentals
P.O. Box 777
Hiawassee, GA 30546



**Six Upscale Vacation Cabins
on Laurel Mtn Rd, Hiawassee**

On-Site Property Mgr!

Minutes from Waterfalls, Hiking Trails,
Horseback Riding, Fishing, Boating



**BREATHTAKING
MOUNTAIN VIEWS**

**www.laurel-mountain-cabins.com
706-896-8015 or 888-859-6018**

CABIN DESCRIPTIONS



Daisy Cabin

2 Bdrm/2 Bath/1 Level Cabin

- King Bed on Main w/bedside Jacuzzi tub and bath
- Queen on Main w/full bath
- Greatroom • Fireplace • Wi-Fi
- Cable TV • Fully Equip Kitchen



Dogwood Cabin

1 Bdrm/1 Bath/1 Level Cabin

- King Bed with bedside Jacuzzi tub and full bath
- Greatroom • Fireplace • Wi-Fi
- Cable TV • Fully Equip Kitchen



Azalea Cabin

1 Bdrm/1 Bath/2 Level Cabin

- King Bed on 2nd Level
- Full bath on Main Level
- Greatroom • Fireplace • Wi-Fi
- Cable TV • Fully Equip Kitchen



Aster Cabin

2 Bdrm/1 Bath/2 Level Cabin

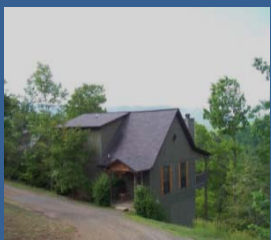
- King Bed on Main w/bedside Jacuzzi tub and bath
- Queen and sleeper sofa in Loft
- Greatroom • Fireplace • Wi-Fi
- Cable TV • Fully Equip Kitchen



Violet Cabin

2 Bdrm/2 Bath/2 Level Cabin

- King Bed on Main w/bedside Jacuzzi tub and full bath
- Queen Up w/full bath • Wi-Fi
- Greatroom w/Sleeper Sofa
- Fireplace • CableTV • Full Kitchen



Lily Cabin

2 Bdrm/2 Bath/2 Level Cabin

- King Bed on Main w/bedside Jacuzzi tub and full bath
- Queen Up w/full bath • Wi-Fi
- Greatroom w/Sleeper Sofa
- Fireplace • CableTV • Full Kitchen

CABIN AMENITIES



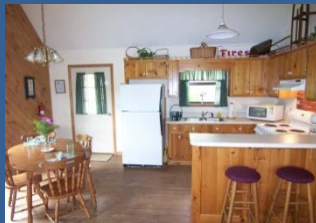
Large Great Rooms

Fireplace, HDTV, DVD player, Phone w/Free Local Calling/Credit Card Long Distance Calling, Free Wi-Fi



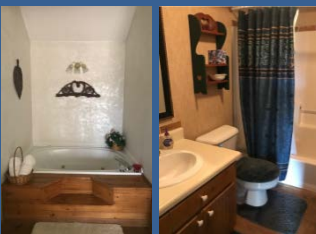
Large Bedrooms

King & Queen beds, Sleeper Sofas, Walk-In Closets, Suitcase Racks, All linens/pillows



Kitchens/Dining

Stove/Oven, Microwave, Fridge/Freezer, Dining Table, Bar Seats, Coffeemaker



Bathrooms

Jetted Jacuzzi tubs, showers, linens, soaps, tissue, and starter shampoo/conditioner



Kitchen Items

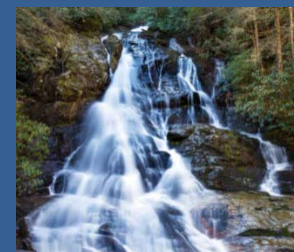
Dishes, pots/pans, silverware, cooking utensils, mitts, dishwasher soaps



Covered Porches

Rockers, swings, tables, grills, Breathtaking Mountain Views!

LOCAL ACTIVITIES



Waterfalls

Come see the many nearby waterfalls (Dry Falls, Flat Shoals Falls, Cupid Falls, Minnehaha Falls, Etc.)



Hiking Trails/Parks

Hike on the Appalachian Trail just 10 minutes away, or visit nearby State Parks 20-30 mins. from cabins.



Horseback Riding

Visit one of many local horseback riding stables, and enjoy the beautiful wooded trails and mountain scenery.



Golfing

Treat yourself to a round of golf at one of a dozen or more local golf clubs (Brasstown Valley, Rabun County Golf Club, Etc.)



Fishing/Boating

Enjoy fishing, boating, and other water sports at Lake Chatuge and Lake Burton in Hiwassee.



Wine Tours & Tasting

Sample the wines and tour local vineyards, including Hightower Creek and Crane Creek Vineyards.